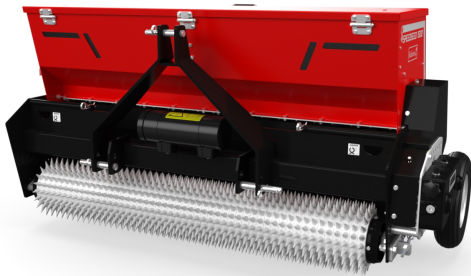




Speedseed 1500

The Speedseed models are ideal to overseed large areas quickly. The individual conical ring sections create seed pockets in the soil in which seed is accurately delivered, the holes are then closed with the roller; the additional spike rear roller increases the holes to 1918 per m² (2294 yd²).



Specifications

SKU	124.160.006
Working width (m)	1.5
Working width (inch)	59
Max. Working depth (mm)	5 - 20
Max. Working depth (inch)	0.19 - 0.78
Max. Working speed (km h)	12
Max. Working speed (mph)	7.5
Weight (kg)	468
Weight (lbs)	1030
Sowing distance (mm)	30
Sowing distance (inch)	1.18
Hopper capacity (L)	224
Hopper capacity (cu.ft.)	7.84
Number of holes single spiked roller (m ²)	990
Number of holes single spiked roller (sq.yd)	1184
Min. Tractor HP required	30
Three-point hitch	3-point CAT 1-2
Lubricant	EP2
Number of rakes	550